

(91)

$$a) 1^{\circ} = \frac{1}{5} // 2^{\circ} = \frac{1}{5} \cdot \frac{1}{3} = \frac{1}{15} // 3^{\circ} = \frac{1}{15} \cdot \frac{1}{2} = \frac{1}{30}$$

$$m.c.m = 30$$

$$1^{\circ} = \frac{1}{5} = \frac{6}{30} // 2^{\circ} = \frac{1}{15} = \frac{2}{30} // 3^{\circ} = \frac{1}{30}$$

$$b) 1^{\circ} = 90 \cdot \frac{1}{5} = 18 \text{ €}$$

$$2^{\circ} = 18 \cdot \frac{1}{3} = 6 \text{ €}$$

$$3^{\circ} = 6 \cdot \frac{1}{2} = 3 \text{ €}$$

$$c) 90 - (18 + 6 + 3) = \underline{\underline{63 \text{ €}}}$$

(94)

$$a) \frac{1}{4} + \frac{1}{3} = \frac{3}{12} + \frac{4}{12} = \frac{7}{12} \text{ Han Caminado}$$

a) Faltan $\frac{5}{12}$ por recorrer, en el tercer día

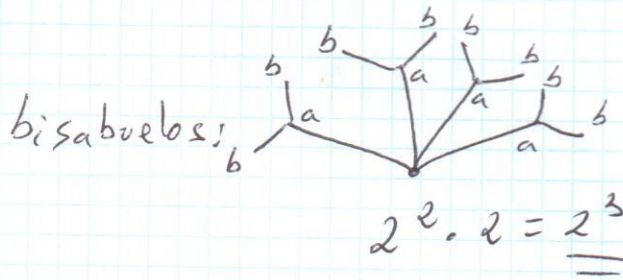
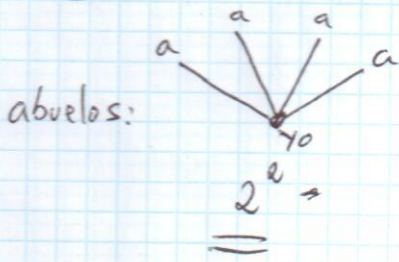
$$b) x \cdot \frac{5}{12} = 25 // x = 25 : \frac{5}{12} = 60 \text{ km}$$

$$\underline{\underline{x = 60 \text{ km}}}$$

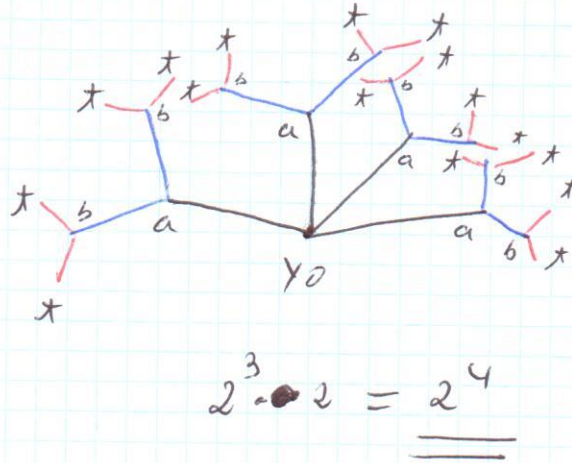
$$(74) a) \frac{524}{100} = \frac{131}{25} // b) \frac{1.735}{1000} = \frac{347}{200} // c) \frac{37-3}{9} = \frac{34}{9}$$

$$d) \frac{543-5}{99} = \frac{538}{99} // e) \frac{512-51}{90} // f) \frac{235-2}{990} = \frac{233}{990}$$

(93)



tatarabuelos



Pag 42

(34) b) $(-5)^6 = 15.625$

(36) a) 9^5 // b) no es posible // c) $4^3 + 4$. No es potencia.

d) $3 \cdot (2 \cdot 5) = 30$ // e) $(-2)^3 \cdot (-3)^3 = (-2 \cdot -3)^3 = 6^3$

f) $24 \cdot 6 = 144 = 12^2$ // g) no es potencia //

e) $5 + 25 + 125 + 625$ (No es potencia)

P43

(47) f) = 1

(52) a) $(3^8) : (-1 \cdot 3)^4 = (3^8) : (-1^4 \cdot 3^4) = \frac{3^8}{1 \cdot 3^4} = 3^4$