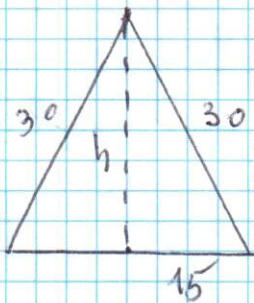


Page 170

61

290812



$$30^2 = 15^2 + h^2$$

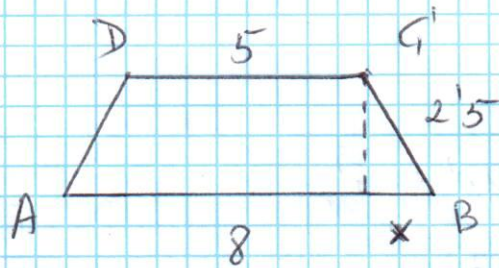
$$h^2 = 30^2 - 15^2 = 675$$

$$h = \sqrt{675} = 25.98 \text{ cm.}$$

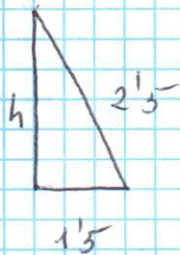
$$A = \frac{25.98 \cdot 15}{2} = \underline{\underline{389.7 \text{ cm}^2}}$$



69



$$x = \frac{8-5}{2} = 1.5$$



$$2.5^2 = 1.5^2 + h^2$$

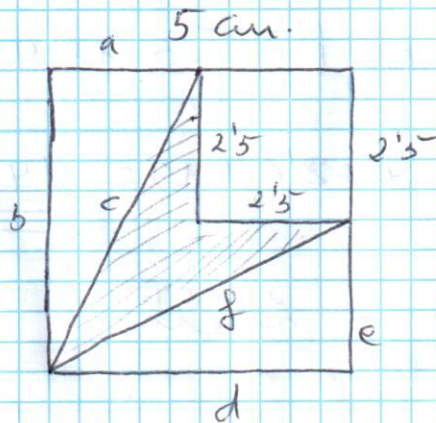
$$h^2 = 2.5^2 - 1.5^2 = 4$$

$$h = \sqrt{4} = 2 \text{ cm}$$

$$A = \frac{(B+b) \cdot h}{2} = \frac{(8+5) \cdot 2}{2} = 13 \text{ cm}^2$$

Pag 171

73a



$$\text{Cuadrado Mayor} - \text{Cuadrado menor} = 5^2 - 2.5^2 = 18.75 \text{ cm}^2$$

$$\text{Triángulo } \triangle abc = \frac{5 \cdot 2.5}{2} = 6.25 \text{ cm}^2$$

$$\text{Triángulo } \triangle edg = \frac{5 \cdot 2.5}{2} = 6.25 \text{ cm}^2$$

$$A = 18.75 - (2 \cdot 6.25) = 6.25 \text{ cm}^2$$



74

$$r^2 = 4^2 + 3^2 = 25 \quad // \quad r = \sqrt{25} = \underline{\underline{5}}$$

$$A = \pi \cdot r^2 = 3,14 \cdot 5^2 = \underline{\underline{78,5 \text{ cm}^2}}$$

