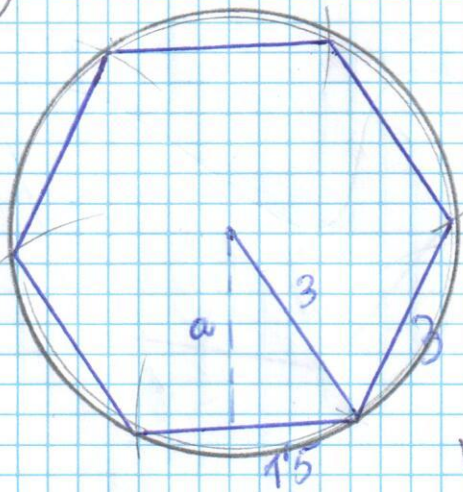


20



$$3^2 = 1.5^2 + a^2$$

$$a^2 = 3^2 - 1.5^2 = 9 - 2.25 = 6.75$$

$$a = \sqrt{6.75} = 2.6$$

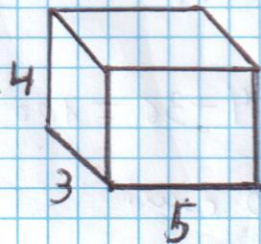
$$V = A_{\text{Base}} \cdot h = \frac{P \cdot a}{2} \cdot h = \frac{18 \cdot 2.6}{2} \cdot 4 = 93.6 \text{ cm}^3$$

21

$$V = A_{\text{base}} \cdot h = \pi R^2 \cdot 4 = 3.14 \cdot 3^2 \cdot 4 = 113.04 \text{ cm}^3$$

22

$$V_{\text{orto}} = 3 \cdot 4 \cdot 5 = 60 \text{ cm}^3$$



$$V_{\text{cubo}} = l^3 // 60 = l^3 // l = \sqrt[3]{60} = 3.91 \text{ cm}$$

Com calculadora = $60^{1/3} = 3.91 \text{ cm}$

23

$$V_1 = \pi R^2 \cdot h^1$$

$$V_2 = \pi (2R)^2 \cdot h_2$$

$$V_1 = V_2$$

$$\pi R^2 \cdot h^1 = \pi (2R)^2 \cdot h_2$$

$$h_1 = \frac{\cancel{\pi} \cdot 4 \cdot \cancel{R^2} \cdot h_2}{\cancel{\pi} \cdot \cancel{R^2}} = 4h_2$$

$$h_1 = 4h_2$$