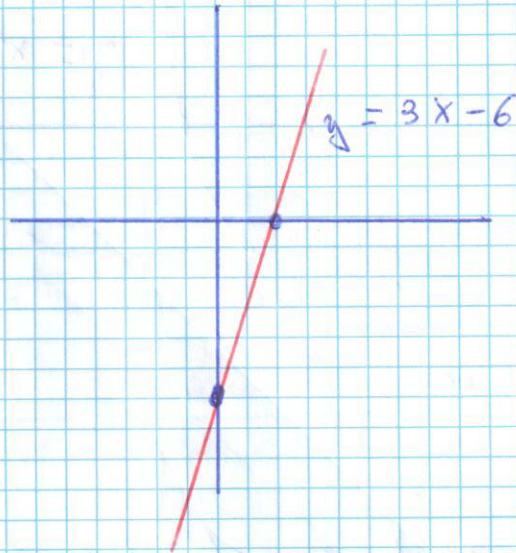


(22) a) $y = 3x - 6$

x	y
0	-6
2	0

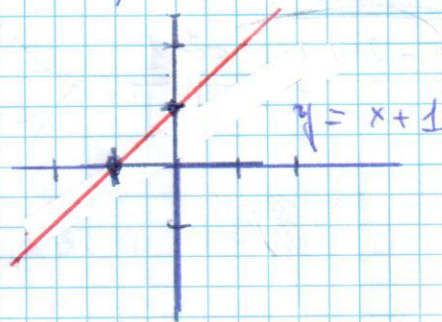
$$0 = 3x - 6 // 3x - 6 = 0 // 3x = 6 // x = \frac{6}{3} = 2$$



(22b) $y = x + 1$

x	y
0	1
-1	0

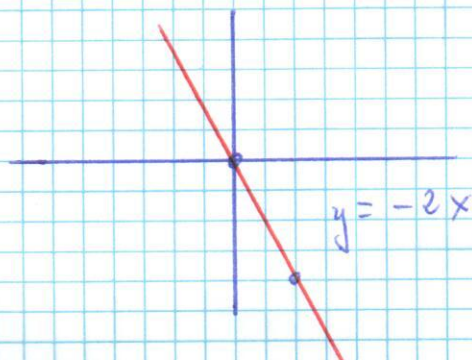
$$0 = x + 1 // x + 1 = 0 // x = -1$$



(22c) $y = -2x$

x	y
0	0
0	0
2	-4

$$0 = -2x // -2x = 0 // x = \frac{0}{-2} = 0 // x = 0$$

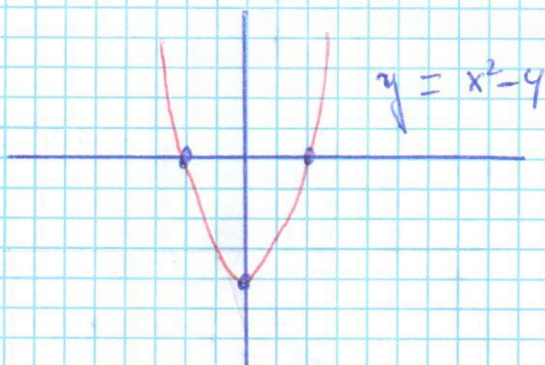


22d

$$y = x^2 - 4$$

x	y
0	-4
2	0
-2	0

$$0 = x^2 - 4 // x^2 - 4 = 0 // x^2 = 4 // x = \sqrt{4} = \begin{cases} +2 \\ -2 \end{cases}$$



23

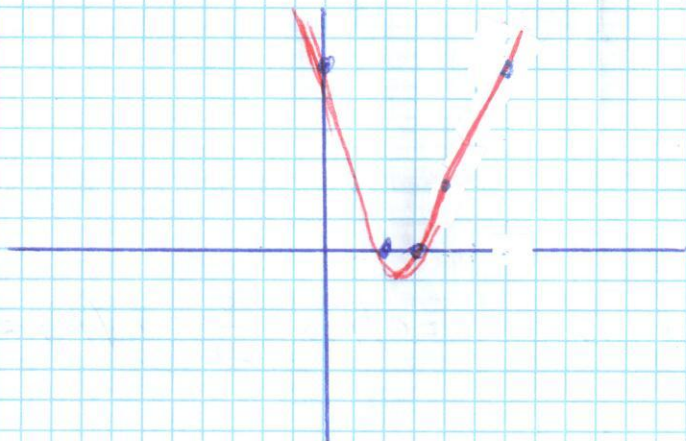
$$y = x^2 - 5x + 6$$

x	y
0	+6
3	0
2	0
4	2
6	6

$$0 = x^2 - 5x + 6 // x^2 - 5x + 6 = 0$$

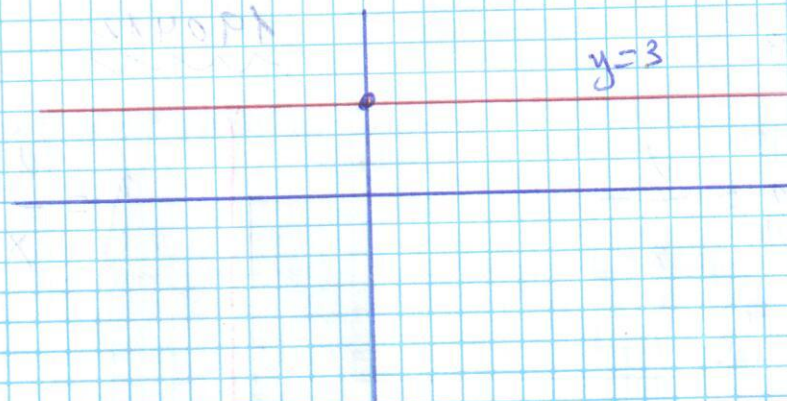
$$x = \frac{-b \pm \sqrt{b^2 - 4ac}}{2a} = \frac{5 \pm \sqrt{25 - (4 \cdot 1 \cdot 6)}}{2 \cdot 1}$$

$$= \frac{5 \pm \sqrt{25 - 24}}{2} = \frac{5 \pm 1}{2} = \begin{cases} x_1 = 3 \\ x_2 = 2 \end{cases}$$



24) $y = 3$

x	y
0	3
1	3
-1	3



25)

Pag 216

74) Medimos la escala que mide 4 cm., por lo tanto sabemos que la escala es

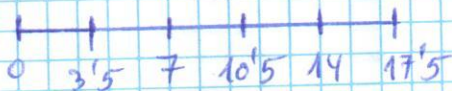
$$a) E = \frac{d \text{ mapa}}{d \text{ realidad}} = \frac{4 \text{ cm}}{32000 \text{ cm}} = \frac{1}{x}$$

$$x = \frac{32000}{4} = 8000 \quad // \quad \text{Escala} = \underline{\underline{1:8000}}$$

$$b) \frac{1}{8000} = \frac{8 \text{ cm}}{x} \quad // \quad x = 8000 \cdot 8 = 64000 \text{ cm} = \underline{\underline{640 \text{ m}}}$$

75)

1:350



1:6000

