

pag 229

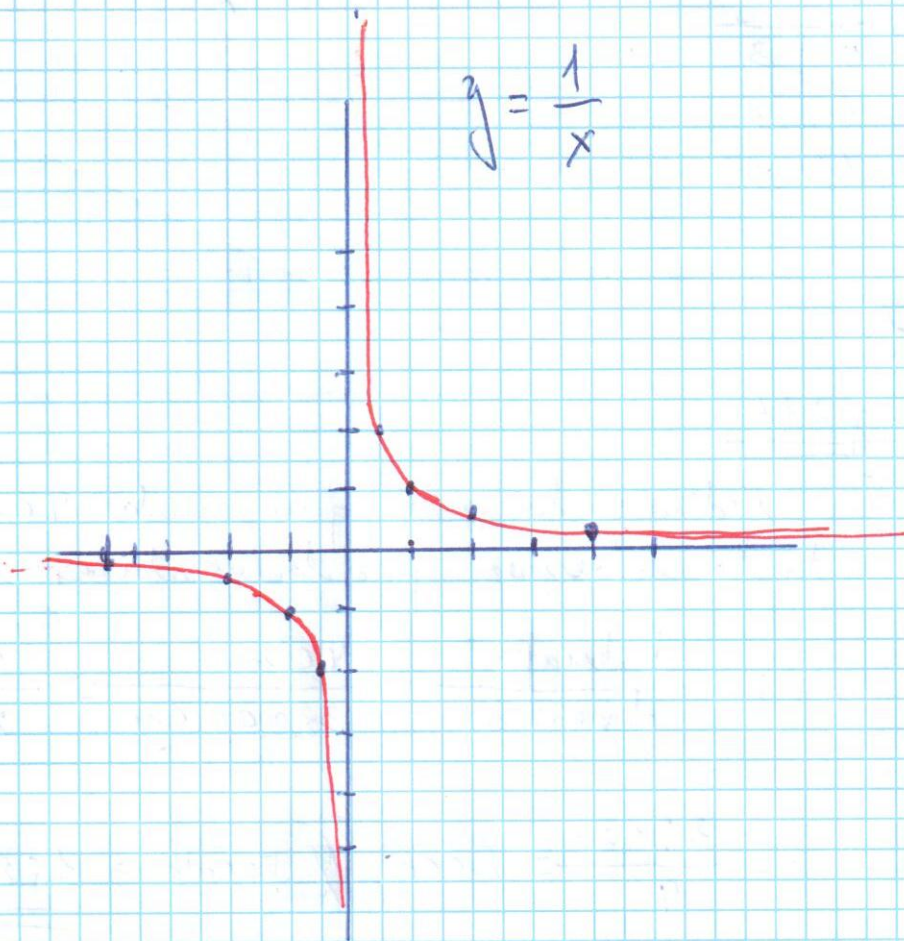
190412

(31)

$$y = \frac{1}{x}$$

$$y = \frac{1}{x}$$

x	y
0	∞
1	1
-1	-1
2	0.5
-2	-0.5
4	0.25
-4	-0.25
0.5	2
-0.5	-2
0.1	10
-0.1	-10
0	0
0	0



Pag 216

(76) a) el 1: 400.000 es mayor

$$b) \frac{1}{400.000} = \frac{x}{2.000.000 \text{ cm}} // x = \frac{2.000.000}{400.000} = \underline{\underline{5 \text{ cm}}}$$

$$\frac{1}{4.000.000} = \frac{x}{2.000.000} // x = \frac{2.000.000}{1.000.000} = \underline{\underline{2 \text{ cm}}}$$

$$c) \frac{1}{400.000} = \frac{2^3}{x} // x = 400.000 \cdot 2^3 = 920.000 \text{ cm} = \underline{\underline{92 \text{ km}}}$$

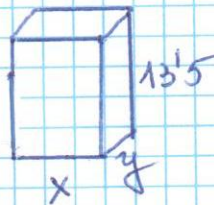
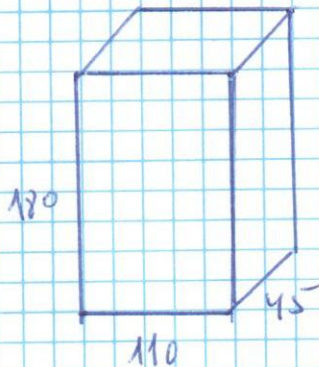
$$d) \frac{1}{1.000.000} = \frac{x}{920.000 \text{ cm}} // x = \frac{920.000}{1.000.000} = \underline{\underline{0,92 \text{ cm}}}$$

~~77~~

Pag 217

(78)

$$180 \times 110 \times 45$$

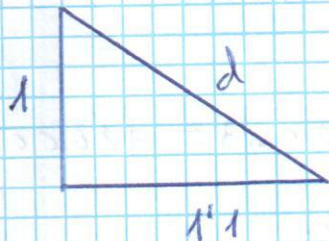
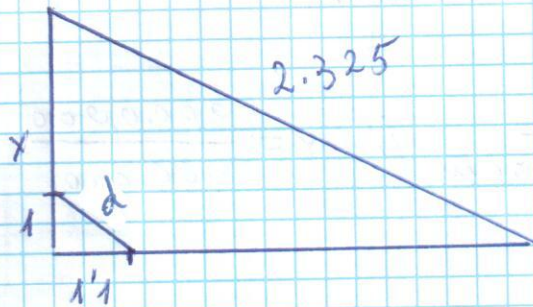


$$\frac{135}{180} = \frac{x}{110} = \frac{y}{45} // x = \frac{110 \cdot 135}{180} = \underline{\underline{82,5 \text{ cm}}}$$

$$y = \frac{45 \cdot 135}{180} = \underline{\underline{33,8 \text{ cm}}}$$

Pag 217

82



$$d^2 = 1^2 + 1'1^2 = 1 + 1'21 = 2'21$$

$$d = \sqrt{2'21} = 1'49 \text{ m.}$$

$$\frac{2325}{1'49} = \frac{x}{1} \quad // \quad x = \frac{2325}{1'49} = 1.560 \text{ m.}$$