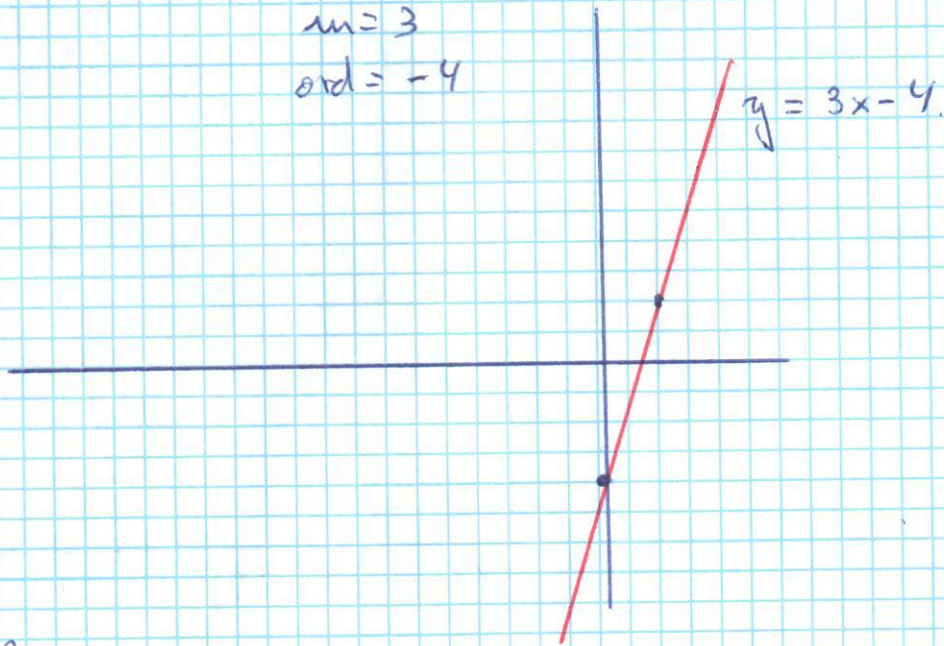


5) a) $y = 3x - 4$ Afim

x	y
0	-4
2	2

$m = 3$
 $ord = -4$



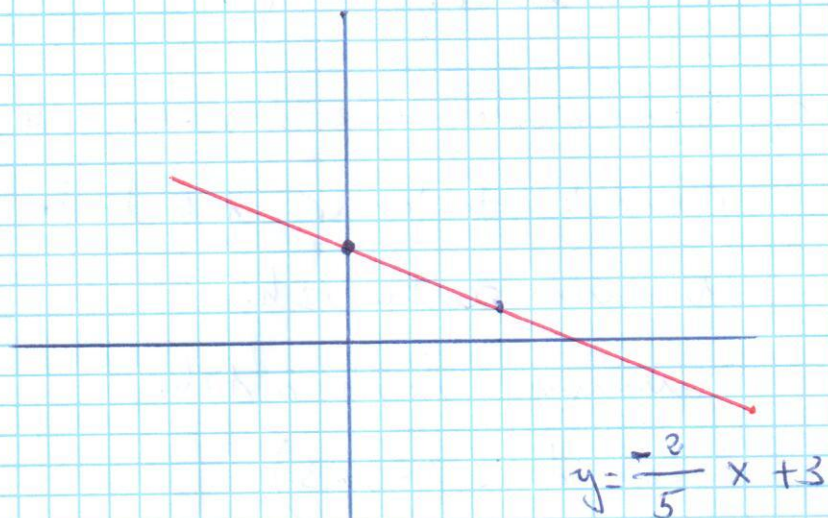
b) $y = \frac{-2}{5}x + 3$

Sfere afim

$m = \frac{-2}{5}$

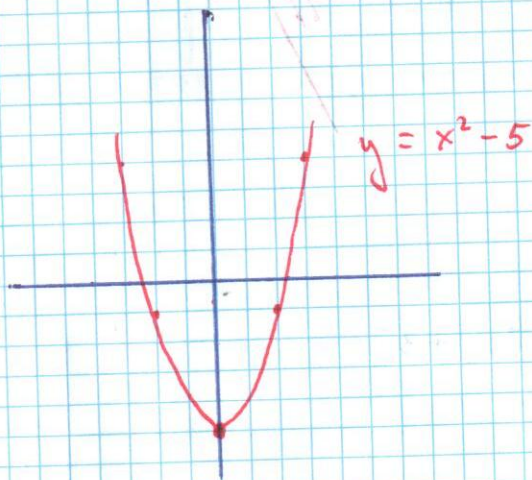
$n = +3$

x	y
0	3
5	



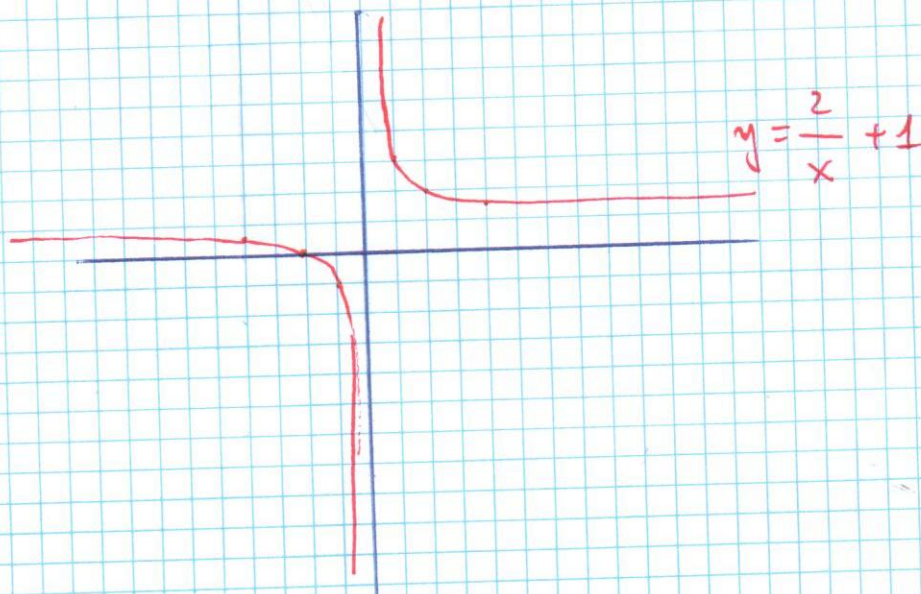
c) $y = x^2 - 5$ No es afín.

x	y
0	-5
3	4
-3	4
2	-1
-2	-1

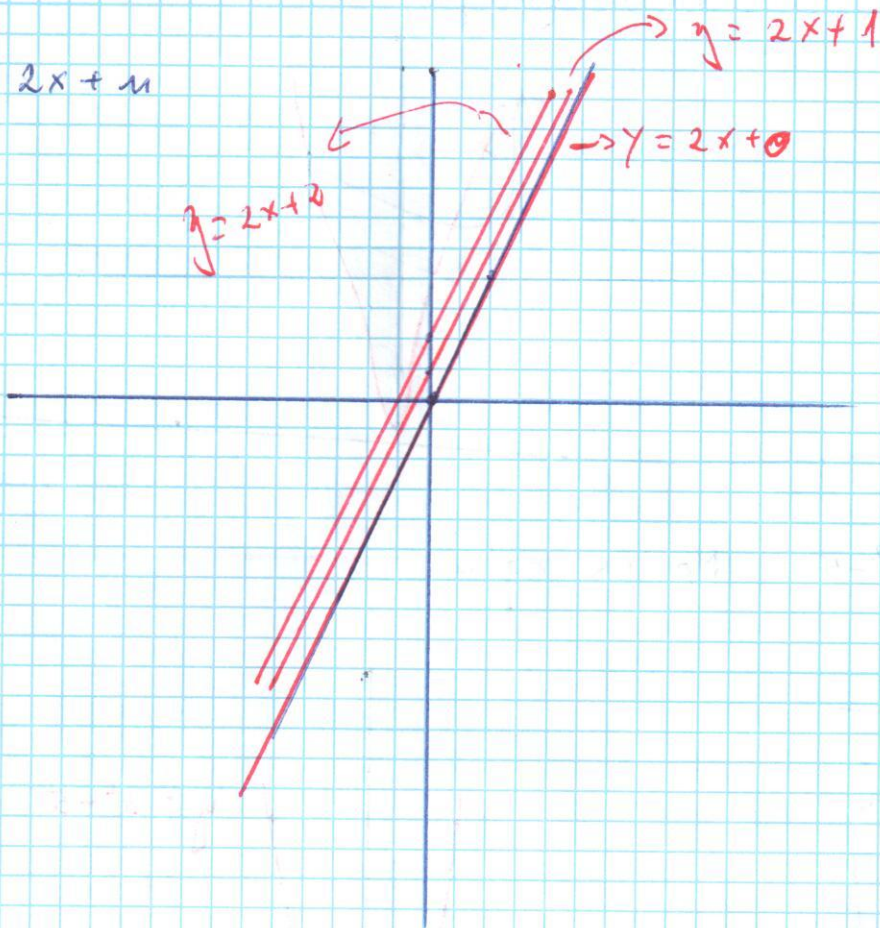


d) $y = \frac{2}{x} + 1$ No es función afín

x	y
0	∞
∞	+1
$-\infty$	-1
2	2
-2	0
4	1.5
-4	-0.5
1	3
-1	-1

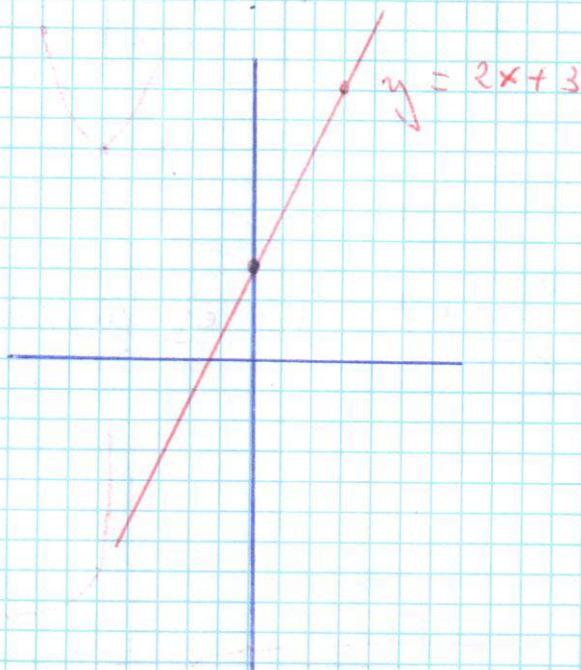


⑥ $y = 2x + n$



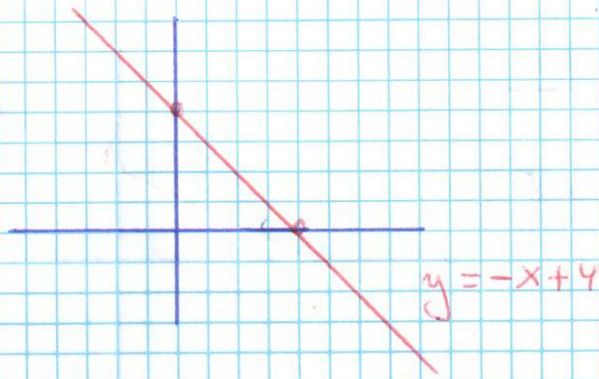
⑦ a) $y = 2x + 3$

x	y
0	3
3	9



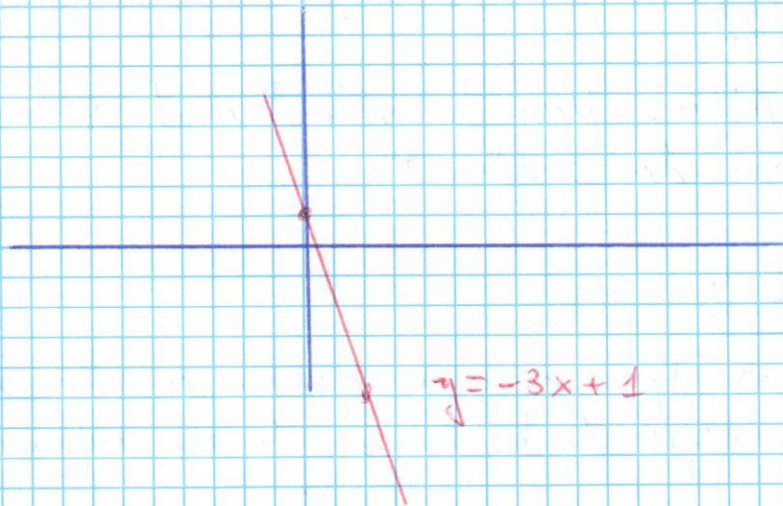
b) $y = -x + 4$

x	y
0	4
4	0



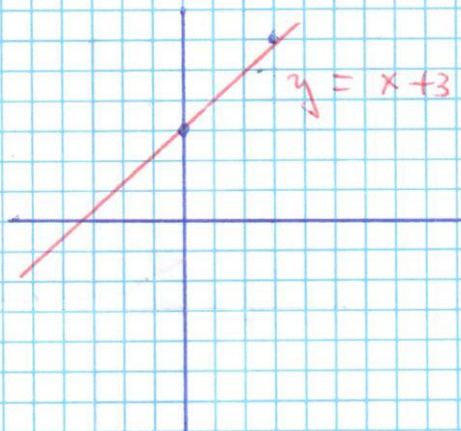
c) $y = -3x + 1$

x	y
0	1
2	-5



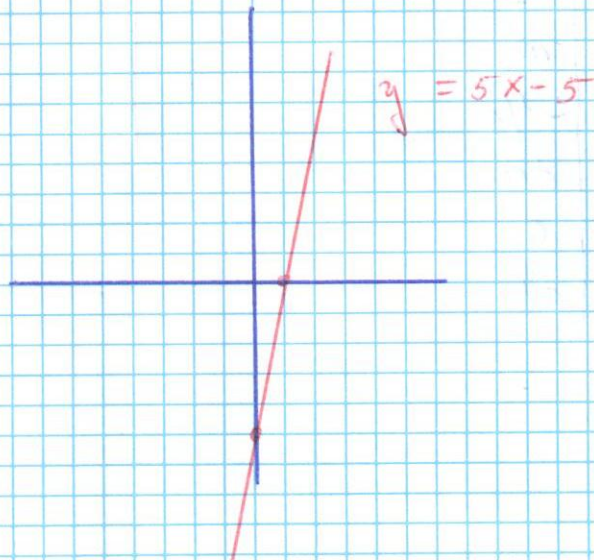
d) $y = x + 3$

x	y
0	3
3	6



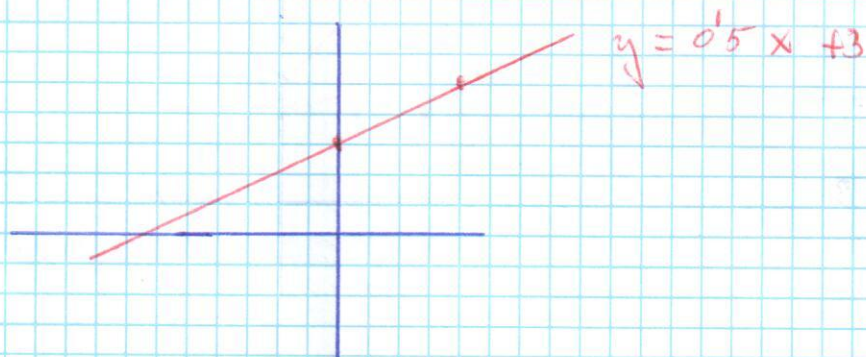
e) $y = 5x - 5$

x	y
0	-5
1	0



$$f) y = 0'5x + 3$$

x	y
0	3
4	5



Pag 243

⑧ Afín. Una función lineal solo puede pasar por dos cuadrantes.

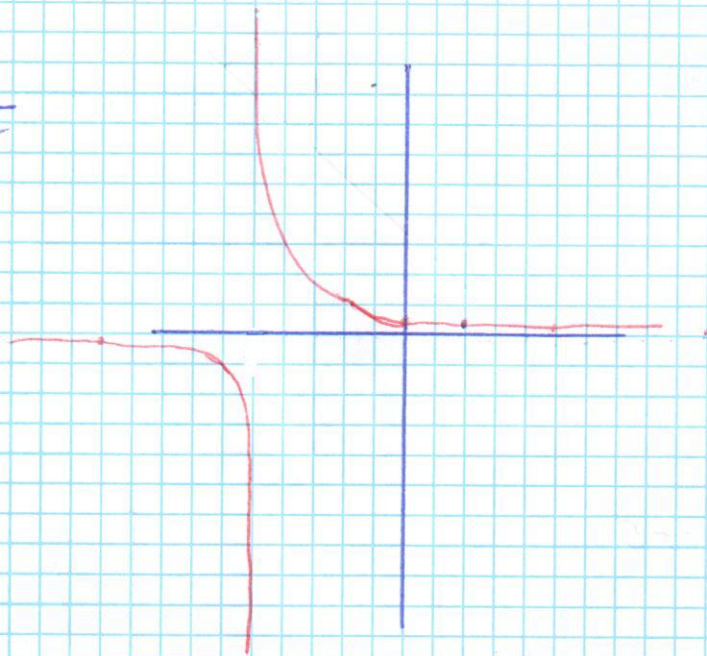
Pag 234

④④ a) Función que asocia a cada número el inverso de la suma de ese número más 5.

a)

$$y = \frac{1}{x+5}$$

b) $y = \frac{1}{3}$

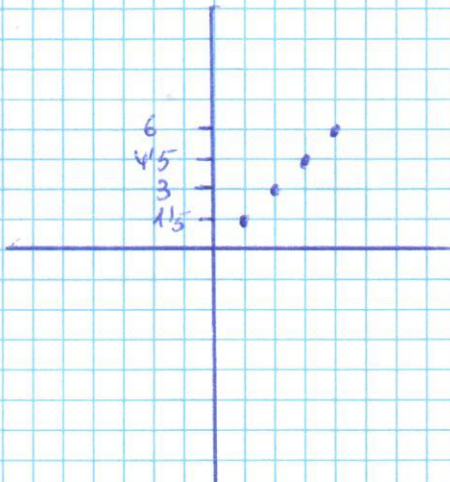


x	y
0	1/5
5	0.2
-5	∞
-10	-1/5
10	0.06
∞	0
2	0.14

47

$$y = 150 \cdot x$$

x	y
0	0
1	150
2	3
3	45
4	6



Pag 235

56

$$f(x) = \sqrt{x+4}$$

$$y = \sqrt{x+4}$$

x	y
0	2
5	3
-3	1
-4	0

