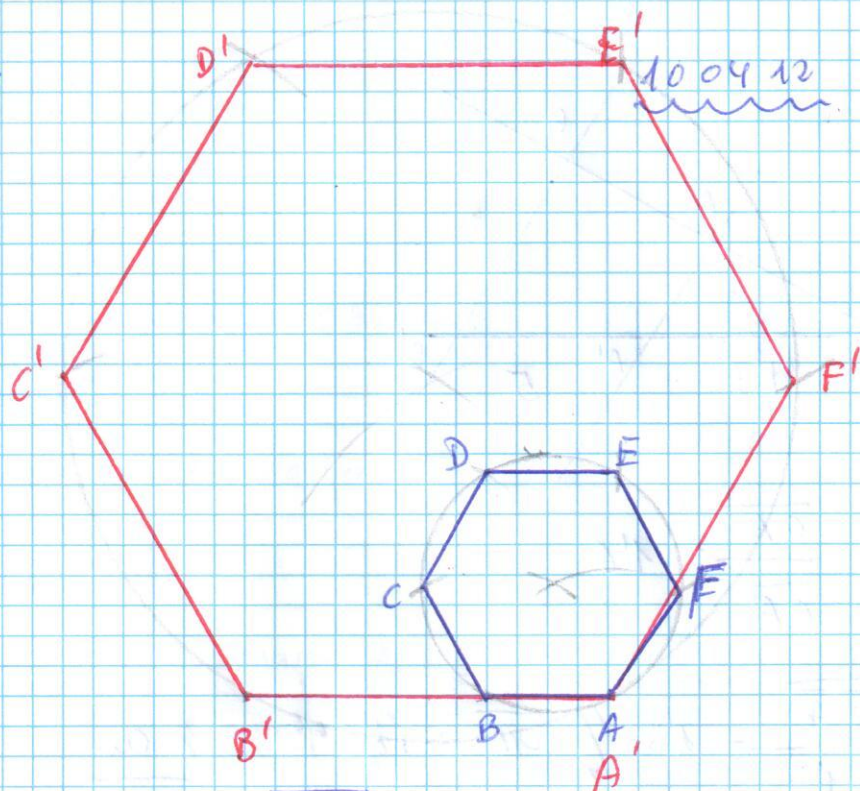


Pag 206

(19)



$$\frac{\overline{A'B'}}{\overline{AB}} = \frac{\overline{B'C'}}{\overline{BC}} = \frac{\overline{C'D'}}{\overline{CD}} = \dots = \frac{3}{1} \rightarrow \text{Rat\u00f3n de semejanza}$$

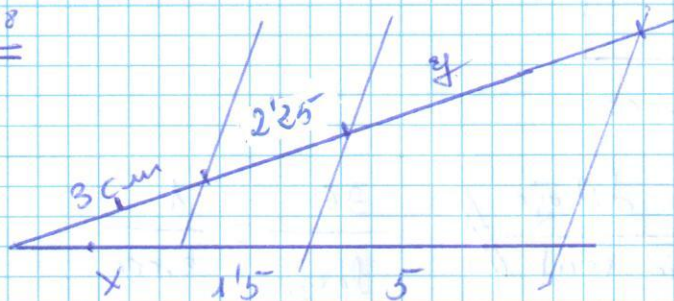
(20)

$$\frac{3}{1.5} = \frac{4}{2} = \frac{5}{2.5} = 2$$

Son semejantes y su raz\u00f3n de semejanza = 2

Pag 208

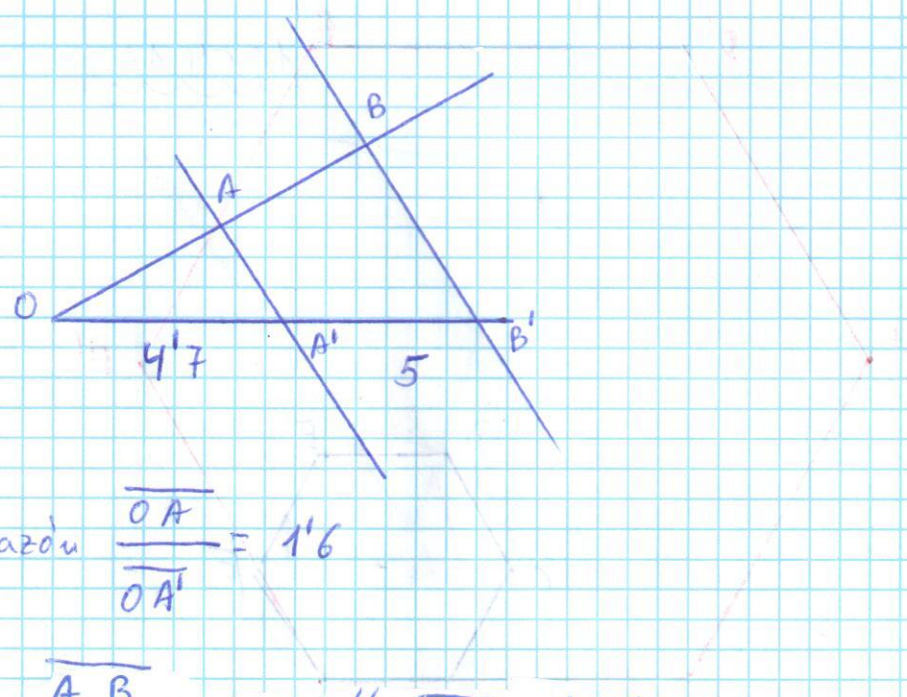
(25)



$$\frac{3}{x} = \frac{2.25}{1.5} \quad // \quad x = \frac{3 \cdot 1.5}{2.25} = \underline{\underline{2 \text{ cm}}}$$

$$\frac{2.25}{1.5} = \frac{y}{5} \quad // \quad y = \frac{2.25 \cdot 5}{1.5} = \underline{\underline{7.5 \text{ cm}}}$$

26



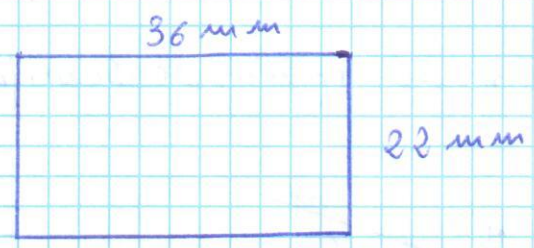
Razon $\frac{\overline{OA}}{\overline{OA'}} = 1'6$

$\frac{\overline{AB}}{\overline{A'B'}} = 1'6 \parallel \overline{AB} = 1'6 \cdot 5 = \underline{\underline{8 \text{ cm}}}$

$\frac{\overline{OB}}{\overline{OB'}} = 1'6 \parallel \overline{OB} = 1'6 \cdot 9'7 = \underline{\underline{15'52 \text{ cm}}}$

Pag 209

27



Escala = 1/3.000

Escala = $\frac{\text{Distancia dibujo}}{\text{Distancia real}} \parallel \frac{36}{\text{largo}} = \frac{1}{3.000}$

$\text{largo} = \frac{36 \cdot 3.000}{1} = 108.000 \text{ mm} = \underline{\underline{108 \text{ m}}}$

$\frac{\text{Distancia dibujo}}{\text{D. real}} = \frac{22 \text{ mm}}{\text{ancho}} = \frac{1}{3.000}$

$\text{ancho} = \frac{22 \cdot 3.000}{1} = 66.000 \text{ mm} = \underline{\underline{66 \text{ m}}}$

29

$$\text{Escala} = \frac{D. \text{ dibujo}}{D. \text{ real}} = \frac{4,5 \text{ cm}}{5400000 \text{ cm}} = 0,00000083$$

$$\frac{1}{0,00000083} = 1.200.000$$

$$\text{Escala} = 1/1.200.000$$

30

$$\text{Escala} = \frac{D. \text{ mapa}}{D. \text{ real}} // \text{Escala} = \frac{1}{200.000} = 0,00000125$$

$$0,00000125 = \frac{D. \text{ mapa}}{50 \text{ km}} // D. \text{ mapa} = 50 \cdot 0,00000125 =$$

$$= 0,0000625 \text{ km} = \underline{\underline{6,25 \text{ cm}}}$$